

RECEIVED  
LARAMIE COUNTY  
CHEYENNE, WY.

'87 AUG 28 AM 9 09

CERTIFIED LAND CORNER RECORDATION

DESCRIPTION OF CORNER EVIDENCE FOUND, AND ORIGINAL RECORD (if known)

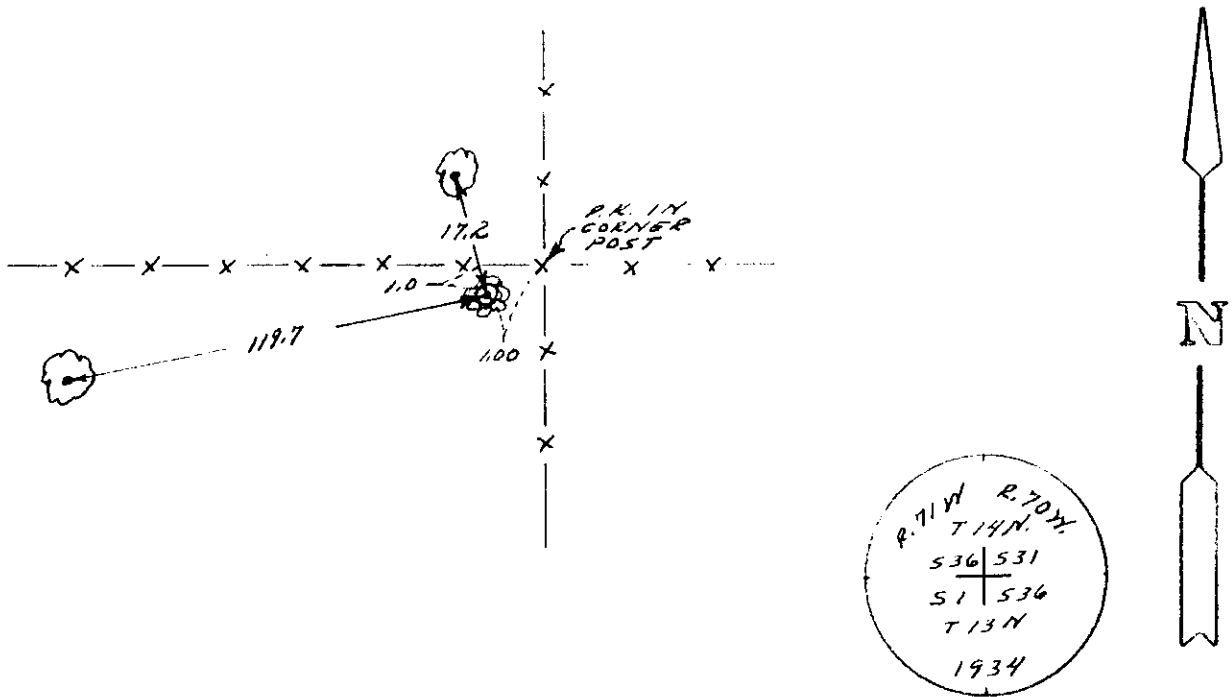
T. 14 N.  
R. 71 W R. 70 W  
36 | 31  
1 | 6  
T. 13 N.

FOUND: STANDARD G.L.O. MONUMENT PROJECTING 0.1 FEET ABOVE GROUND ENCIRCLED BY A COLLAR OF STONE AND STAMPED AS SHOWN BELOW.  
FOUND: ORIGINAL BEARING TREE 14" IN DIA. PINE TREE BEARS N41°E A DISTANCE OF 17.2 FEET, SCRIBED "T14 N R 70 W 536 BT"  
FOUND: ORIGINAL BEARING TREE 18" IN DIA. PINE TREE BEARS S83°W A DISTANCE OF 119.7 FEET SCRIBING NOT VISIBLE.

DESCRIPTION OF MONUMENT AND ACCESSORIES ESTABLISHED TO PERPETUATE THE ORIGINAL LOCATION OF THIS CORNER:

SEE TIES BELOW

SKETCH, WITH COURSE AND DISTANCE TO ADJACENT CORNER IF DETERMINED IN THIS SURVEY. (May Sketch or Paste Reproduction on Reverse Side.)



I, JOHN A. STEIL certify that I have carefully performed or reviewed the work done on the diagrammed corner as reported on this recordation form and approve the same.

John A. Steil  
Signature of Surveyor

L.S. 2500  
Registration No.

STATE OF WYOMING,  
Office of Clerk and Recorder,  
County of Laramie

This "corner record" was filed for record on the 28 day of August, 1987, was noted on the cross-index plat and is assigned page No. \_\_\_\_\_, in book No. \_\_\_\_\_.

Janet C. Whitehead  
County Official

Cross Index No. <u>A-1</u>	T. <u>13 N</u>	R. <u>70 W</u>	Mer. <u>6 1/2</u>
<u>A-25</u>	T. <u>13 N</u>	R. <u>71 W</u>	Mer. <u>6 1/2</u>
<u>2-1</u>	T. <u>14 N</u>	R. <u>70 W</u>	Mer. <u>6 1/2</u>
<u>2-25</u>	T. <u>14 N</u>	R. <u>71 W</u>	Mer. <u>6 1/2</u>
_____	T. _____	R. _____	Mer. _____
_____	T. _____	R. _____	Mer. _____
_____	T. _____	R. _____	Mer. _____